

7.1.2 The Institution has facilities and initiatives for

1. Alternate sources of energy and energy conservation measures
2. Management of the various types of degradable and nondegradable waste
3. Water conservation
4. Green campus initiatives
5. Disabled-friendly, barrier free environment

Item	Sub-item
7.1.2	1. More Geo tagged photographs and videos of the facilities with caption and Bills for the purchase of equipment's for the facilities is provided
	2. Brief report of the facilities is provided
	3. Ramps / rails/lift/wheel chair/signage board/restroom/software should include specific requirement of Divyangjan for their use is provided

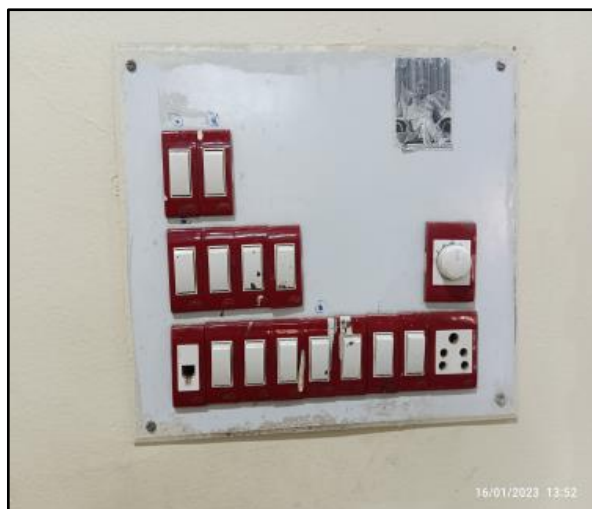
1. Geotagged photographs and videos of the facilities with captions is provided for Solar panel backup system and its use.



Solar Panel



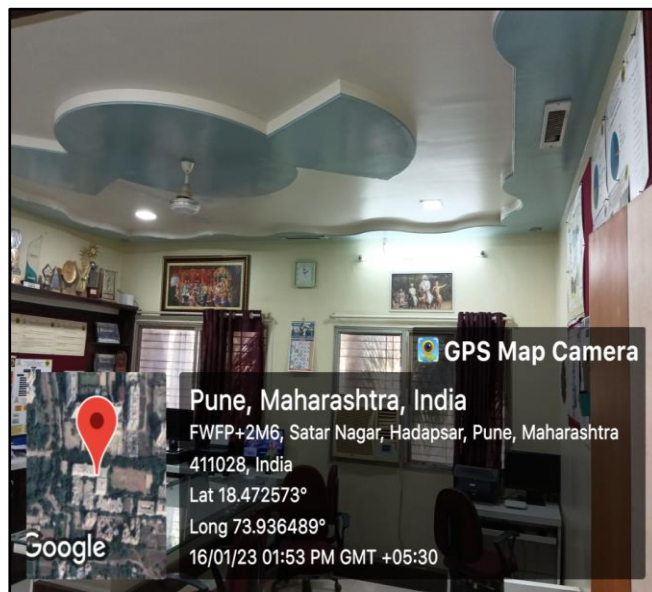
Solar to battery connection to convert to electrical supply



P. H.
Principal
JSPM's Jayawant Rao Sawant
College of Engineering,
Hadapsar, Pune - 28



Use of Electricity in Conference hall C 307



Use of Electricity in HOD Cabin C101

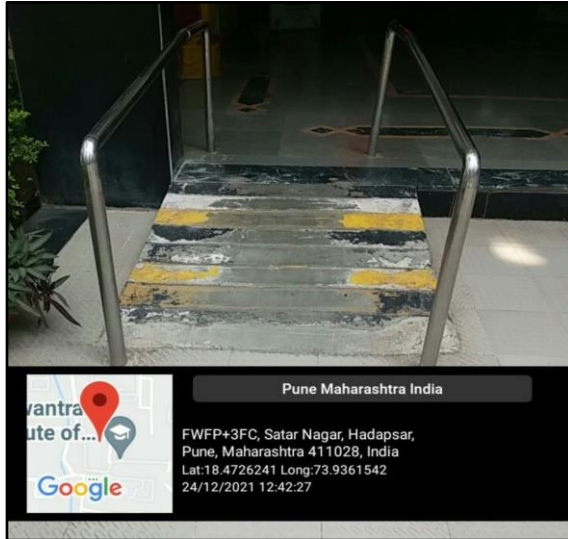
Principal
JSPM's Jayawantrao Sawant
College of Engineering,
Hadapsar, Pune - 28

2. brief report of facilities:

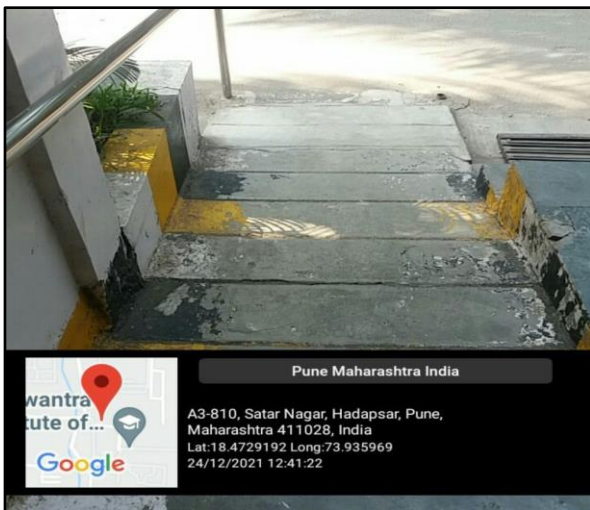
<https://www.jspmjscoe.edu.in/storage/NAAC/specific%20facilities%20provided%20to%20girl%20students.pdf>

3. Ramps / rails/lift/wheel chair/signage board/restroom/ software should include specific requirement of Divyangjan for their use is provided.

1. Ramps available at 'A' building



2. Ramps available at 'B' building



3. Wheel chair



4. **Lift** – Lift facility is available for staff and students.



5. **Sick Room** – Sick rooms are available for medical emergency. Doctor visits in the sick rooms.



6. Western Toilet



P. K.
Principal
JSPM's Jayawantrao Sawant
College of Engineering,
Hadapsar, Pune - 28